

Your Custom Knock Down Rebuild Specialist



THE ILUKA 46



Complexities and intricacies are inherent in great design.

The Iluka 46' is a testament to these details from the curved masonry of the ground floor to the cantilevered feature balcony. With all the trimmings internally you would expect with an Icon Home, the showpiece is the Master Suite and Entertainers Kitchen.

Give the team at Icon a call today to discuss all the designer inclusions that are available in all of our FIXED price contracts.

There are no nasty surprises when you build with Icon Homes.

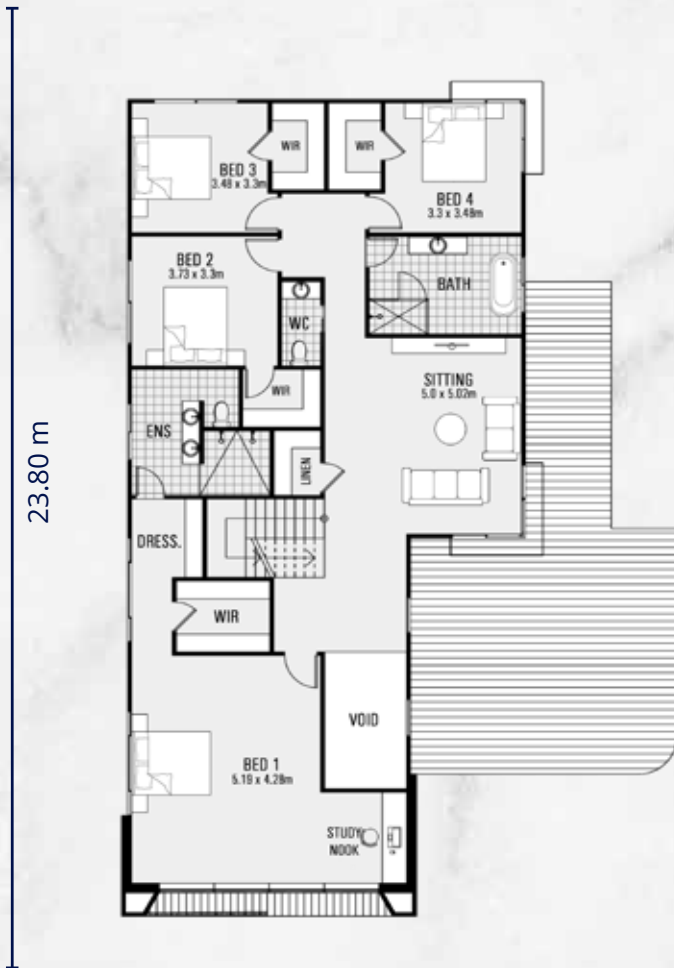
Live the dream!

Call **1800 MY ICON** for more information or visit our website **iconhomes.com.au**





GROUND FLOOR



FIRST FLOOR

THE ILUKA 46

 **5**  **3**  **2**

Itemised Floor Areas

Living	348.35 sqm
Garage	45.10 sqm
Porch	6.96 sqm
Alfresco	21.45 sqm
Total	421.86 sqm

Land Requirements

Minimum Length	30.74 m
Minimum Width	19.00 m
Minimum Area	604.00 m ²

FITS 19M BLOCK WIDTH

For a full list of inclusions visit iconhomes.com.au

All imagery and photography used on this brochure should be used as a guide only and may depict fixtures and features that are not supplied by Icon Homes unless specified. These may include items such as, furnishings, landscaping, retaining walls, lighting, blinds, decorative finishes and facade upgrades. Please see your Sales Consultant for a full list of your Icon Homes inclusion package. Note: all measurements noted are in millimeters unless specified. Icon homes has the right to review Inclusion and Pricing packages at any time and will be subject to all Statuary and Developer approvals. Effective August 2021.

