

# THE AUSTIN 21



**The Austin 21 Design (Modern Facade)** is the perfect home for the family that loves to spend their time outdoors. It combines a functional internal space with an oversized alfresco

Give the team at Icon a call today to discuss all the designer inclusions that are available in all of our **FIXED** price contracts. There are no nasty surprises when you build with Icon Homes.

Live the dream!



## ICON HOMES BEST VALUE PACKAGE

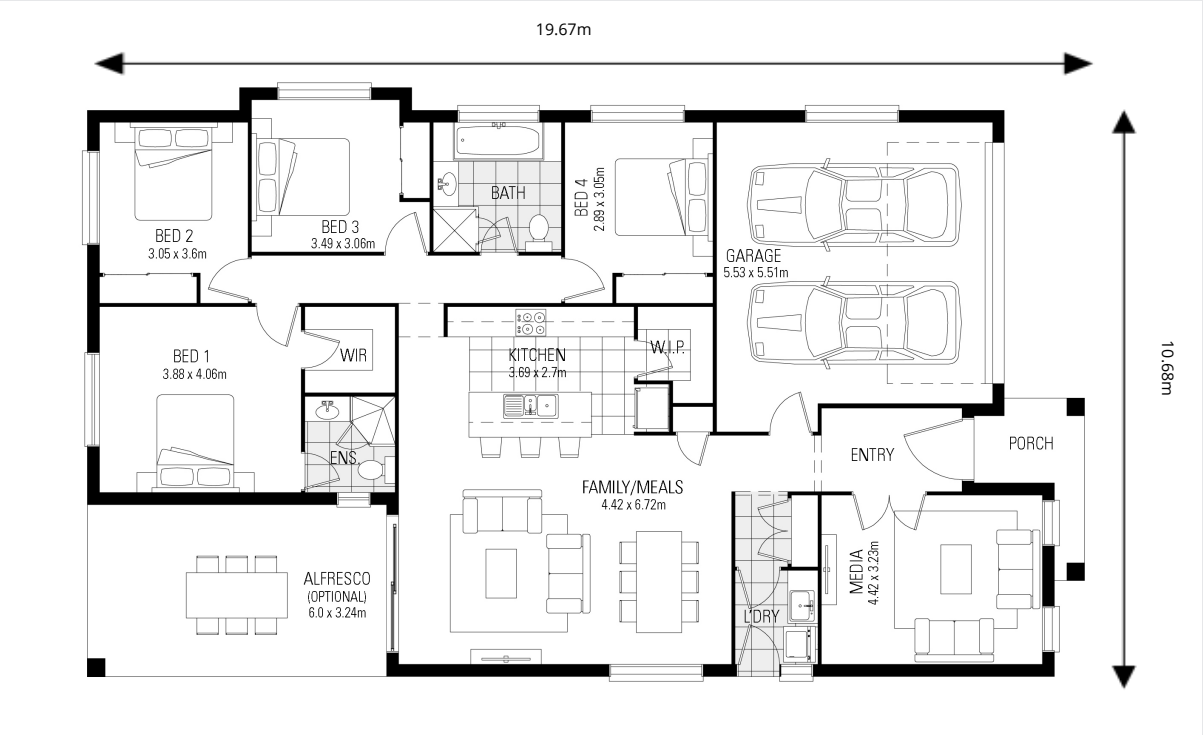
Please call **1800 MY ICON** to make an appointment to view the Icon Homes display homes | [iconhomes.com.au](#)

# THE AUSTIN 21

Fits 12.5m block width

For a full list of inclusions visit  
[iconhomes.com.au](http://iconhomes.com.au)

4  2  2 



Itemised Floor Areas	Area
Living	139.31sqm
Garage	38.35sqm
Alfresco	18.03sqm
Porch	4.06sqm
<b>Total</b>	<b>199.75sqm</b>

Land Requirements	
Min Length	26.45m
Min Width	12.50m
Min Area	330.63sqm

### FACADE OPTIONS

Modern



Classic



Hampton



*Live the dream.*

Please call **1800 MY ICON** to make an appointment to view the Icon Homes display homes | [iconhomes.com.au](http://iconhomes.com.au)

All imagery and photography used on this brochure should be used as a guide only and may depict fixtures and features that are not supplied by Icon Homes unless specified. These may include items such as, furnishings, landscaping, retaining walls, lighting, blinds, decorative finishes and facade upgrades. Please see your Sales Consultant for a full list of your Icon Homes inclusion package. Note: all measurements noted are in millimetres unless specified. Icon homes has the right to review Inclusion and Pricing packages at any time and will be subject to all Statuary and Developer approvals