

THE MONTPELLIER 38



The Montpelier 38 is the latest creation from the design team at *Artisan* by Icon Homes. Inspired by the Neoclassical motifs the region is famous for, the Montpelier combines timeless elegance with modern practicality. Enjoy the feeling of the outdoors with the luxury of the opulent living areas and practicality of five generous bedrooms.

Give the team at Icon a call today to discuss all the designer inclusions that are available in all of our FIXED price contracts. There are no nasty surprises when you build with Icon Homes.
Live the dream!



ICON HOMES BEST VALUE PACKAGE

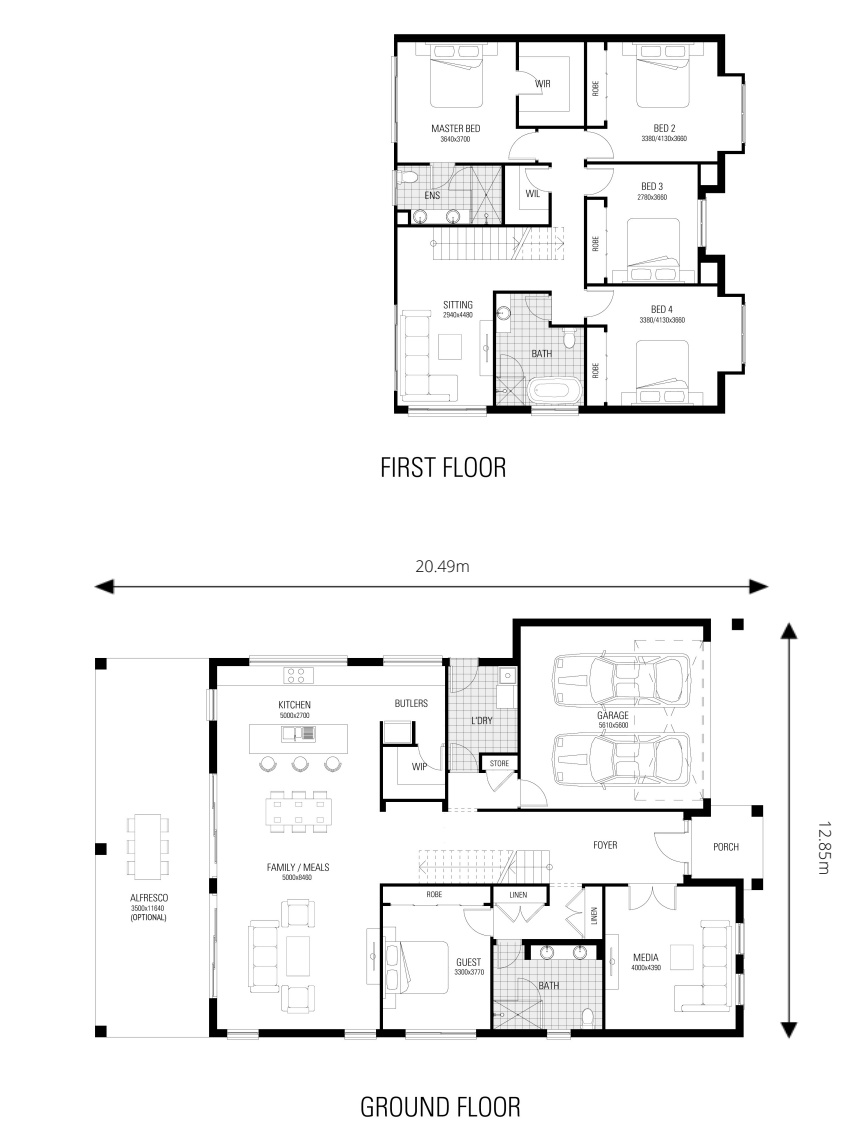
Please call **1800 MY ICON** to make an appointment to view the Icon Homes display homes | [iconhomes.com.au](https://www.iconhomes.com.au)

THE MONTPELLIER 38

Fits 15m block width

For a full list of inclusions visit iconhomes.com.au

5  3  2 



Itemised Floor Areas	Area
Living	271.13sqm
Garage	35.44sqm
Alfresco	40.74sqm
Porch	4.95sqm
Total	352.26sqm

Land Requirements	
Min Length	30.00m
Min Width	15.00m
Min Area	450.00sqm

Live the dream.

Please call **1800 MY ICON** to make an appointment to view the Icon Homes display homes | iconhomes.com.au

All imagery and photography used on this brochure should be used as a guide only and may depict fixtures and features that are not supplied by Icon Homes unless specified. These may include items such as, furnishings, landscaping, retaining walls, lighting, blinds, decorative finishes and facade upgrades. Please see your Sales Consultant for a full list of your Icon Homes inclusion package. Note: all measurements noted are in millimetres unless specified. Icon homes has the right to review Inclusion and Pricing packages at any time and will be subject to all Statutory and Developer approvals